

aarke

Changing cylinder gasket

Step 1



Make sure that the CO2 cylinder is not installed in the machine. A few inches below the black splitline there is a screw. Unscrew it with a Torx T10 screwdriver. Machines from late 2017 and onwards has a normal cross-head screw.

Step 2



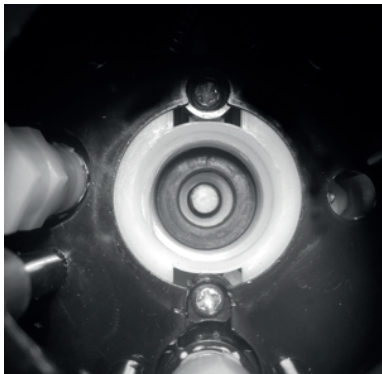
Grab the upper part and lift it out from the body.

Step 3



Turn the upper part up side down and look into it. If needed, take out the old gasket with a big tweezer / nipper.

Step 4



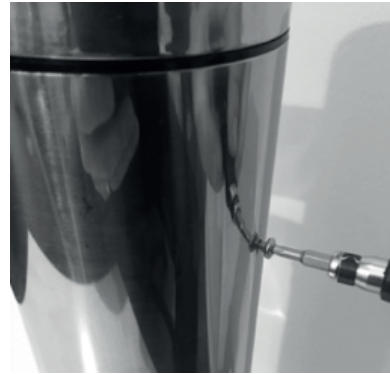
Put the new sealing into the hole and push it in place all around the edge with a screwdriver. When you are done it should lie flat against the floor. When you are finished it should look like the picture. You can also use a CO2 cylinder to press it in place by screwing it in against the sealing.

Step 5



Put the top part back on the main body. Make sure you put it back straight and in the right direction.

Step 6



Screw it back. Done!

If you have questions, please mail us at support@aarke.com